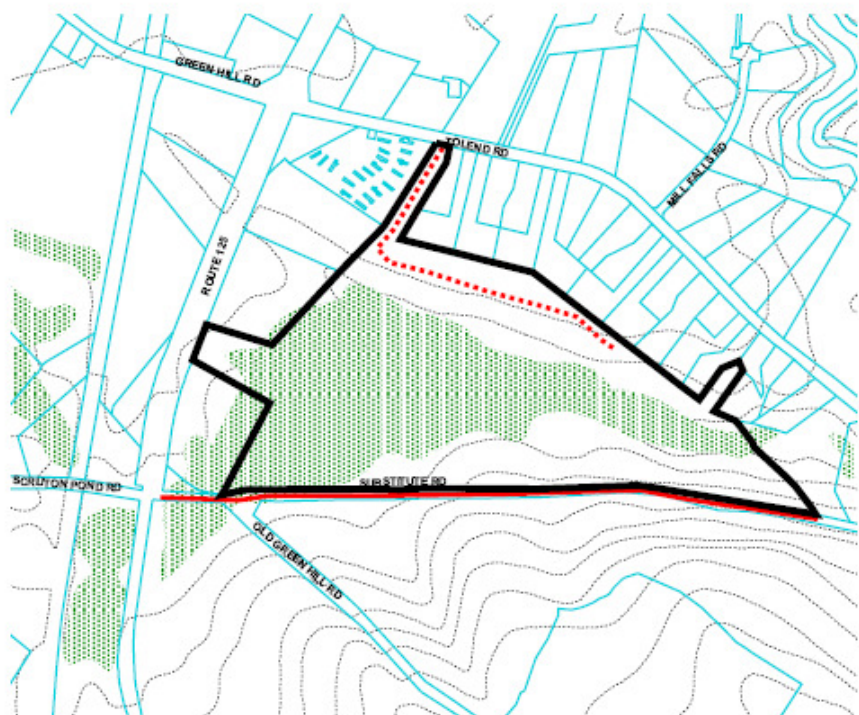








Chestnut Forest



500 0 500 1000 Feet

-  Chestnut Forest
-  Substitute Rd Trail
-  Proposed
-  Tax Map 2016
-  Swamp/wetland
-  Topo lines



*‘On a hike, the days pass with the wind, the sun, the stars;
movement is powered by a belly full of food and water,
not a noxious tankful of fossil fuels. On a hike, you're
less a job title and more a human being’*

Ken Ilgunas, Trespassing Across America: One Man's Epic, Never-Done-Before (and Sort of Illegal) Hike Across the Heartland

CHESTNUT FOREST

Trail length:	About 0.7 miles one way
Difficulty:	Easy to moderate
Location:	Substitute Rd., Tolend Rd.
Activities:	Hiking, snowshoeing, hunting
Parking:	Difficult. Along the highway, or across from trail, on Scruton Pond Rd. Access from Tolend Rd. to be established.
Acreage:	64

Chestnut Forest was deeded to the town in 2016 as conservation land associated with a subdivision along Tolend Rd. and Route 125. It borders a large prime wetland and features an upland area sprinkled with some fine stands of young American Hornbeam trees. It also contains the Strafford County champion crack willow tree a short distance from Substitute Road and Route 125.

Presently the only real access to the property is along Substitute Rd., a class 6 (unmaintained) road off of Route 125 opposite Scruton Pond Rd. The end of Substitute Rd. is in fact part of the swamp/wetland that comprises much of the property, so if conditions are not very dry or very frozen, you will need waterproof footwear.

All that being said, a walk along Substitute Road is very pleasant and affords access to a fine floodplain forest.

There is an access corridor from Tolend Rd. to the northern part of the property, but a trail through it has not yet been developed.